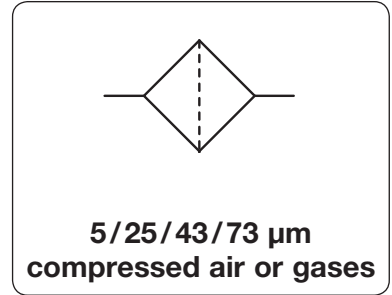


Micro In-Line Filter

F950/F960/F970

Description	Compact in-line filter with fittings or threaded connection. Flow direction and filter size in μm are clearly marked.	
Media	compressed air or non-corrosive gases	
Diameter tolerances	-3% to +10% of nominal diameter	
Filter element	5 μm , 25 μm , 43 μm or 73 μm	
Operating pressure	max. 8.6 bar	
Temperature range	5 °C to 50 °C / 41 °F to 122 °F	
Material	Body: polysulphone	Filter element: Dutch weave stainless steel



Dimensions A mm	Operating pressure max. bar	Connection inlet / outlet	Filter element μm	Order number
-----------------------	-----------------------------------	------------------------------	------------------------------------	-----------------

Micro pressure filter			operating pressure max. 8.6 bar	F900
26	8.6	fittings $\text{\O} 2.7$	5	F950-05B80
			25	F950-25B80
			43	F950-43B80
			73	F950-73B80
30	8.6	fittings $\text{\O} 4.7$	5	F950-05B85
			25	F950-25B85
			43	F950-43B85
			73	F950-73B85
24	8.6	10-32" / fittings $\text{\O} 2.7$	5	F960-05B80
			25	F960-25B80
			43	F960-43B80
			73	F960-73B80
28	8.6	10-32" / fittings $\text{\O} 4.7$	5	F960-05B85
			25	F960-25B85
			43	F960-43B85
			73	F960-73B85
15	8.6	10-32" / 10-32"	5	F970-05
			25	F970-25
			43	F970-43
			73	F970-73



F950 with nipple



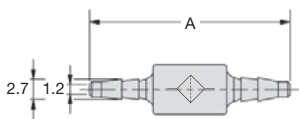
F960 with nipple and thread



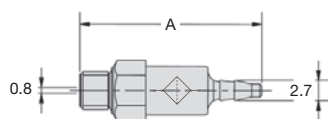
F970 with thread

Accessories

connecting nipple for F960 and F970	10-32" / fitting $\text{\O} 2.7$	F3120-80
	$\text{\O} 4.7$	F3120-85
	$\text{\O} 5.6$	F3120-86

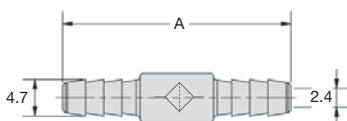


F950...B80

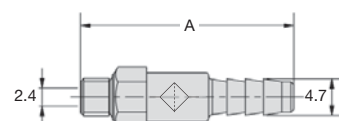


F960...B80

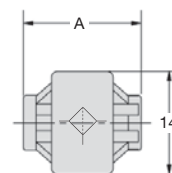
fitting	for tube	
B80	$\text{\O} 2.7$	$\frac{1}{16}$ " $\text{\O} 1.6$ mm
B85	$\text{\O} 4.7$	$\frac{1}{8}$ " $\text{\O} 3.2$ mm
B86	$\text{\O} 5.6$	0.17" $\text{\O} 4.3$ mm



F950...B85



F960...B85



F970

PDF CAD
www.aircom.net



Order example:
F950-05B80